

SAMPLE INJECTION VALVE

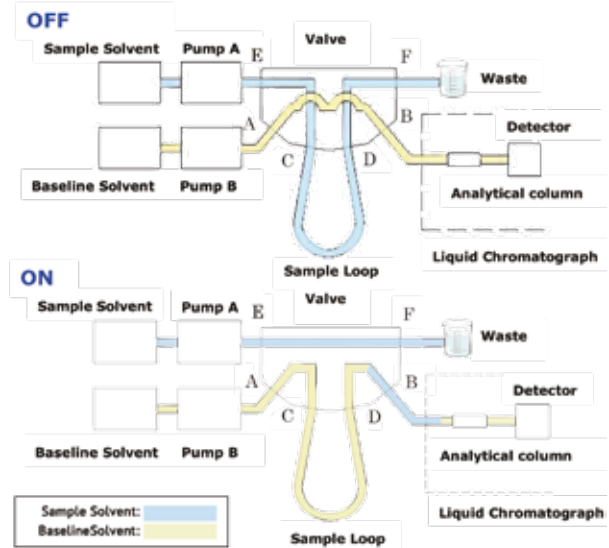
2 positions, 6 connections
Orifice diameter 0.4 mm (DN)

Sample injection valve



This 2-position, 6-port valve is the first solenoid valve for injecting samples, which is controlled with a linear actuator.

As an alternative to conventional rotary valves, this solution offers various advantages. It is much easier to control, offers a smaller design and has a long service life. The internal volume is only 9.0 µl. A valve with 2 positions and 4 ports is also available.



SPECIFICATIONS

Sample injection valve	
Type	2 positions, 6 connections
Orifice diameter	0.4 mm (DN)
Port connection	10-32UNF
Rated voltage	12 VDC 24 VDC
Operating pressure range	Inlet: 0 - 5000 mbar (High pressure version: 0 - 25000 mbar)
Body material	PEEK
Other wetted materials	PTFE, SiC (Silicon Carbide) (ZrO ₂ (Zirconium Dioxide) for high pressure version)
Fluid temperature range	5 - 50°C
Ambient temperature range	5 - 50°C
Power consumption	23 W (3.6 W using holding voltage electronics) (18 W (3.0 W using holding voltage electronics) for high pressure version)
Outer dimensions	33.0 x 42.0 x 62.0 mm

Customisable to specific requirements (e.g. higher pressure range, different operating mode, higher temperature range, different operating voltage, different port connections,...)